

# Level 2 Written Test 3 – Teacher Information

Can be set after Lesson 36 has been completed

## Written Test Answers

### Q. 1

Add barlines to these rhythms.

a.



b.



(4 marks)

### Q. 2

Rewrite this rhythm using correct note groupings.



(3 marks)

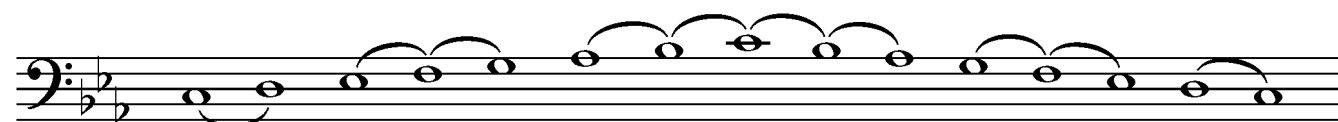
### Q. 3

Write the following scales.

- a. D (do) Major pentatonic, using accidentals, ascending and descending, in minims.  
Use slurs to show the pairs of notes that are a minor third apart.



- b. C Natural minor, using a key signature, ascending and descending, in semibreves.  
Use slurs to show the pairs of notes that are a Major 2nd apart.



(4 marks)

**Q. 4**

Write the following minor key signatures.



B minor

G minor

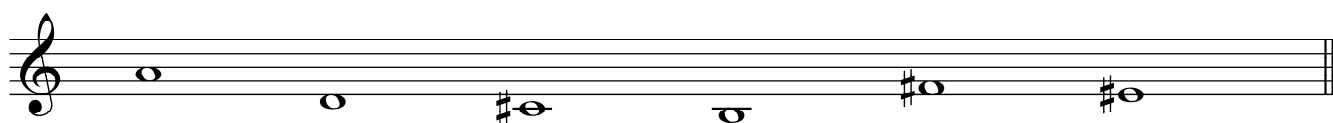
C minor

F# minor

(4 marks)

**Q. 5**

Write the following notes in F# harmonic minor.



Mediant

Submediant

Dominant

Subdominant

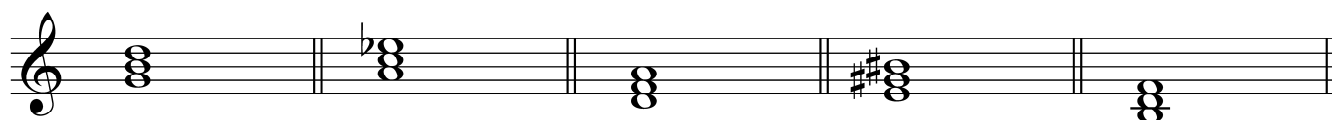
Tonic

Leading Note

(6 marks)

**Q. 6**

Name the quality of these triads.



Major

diminished

minor

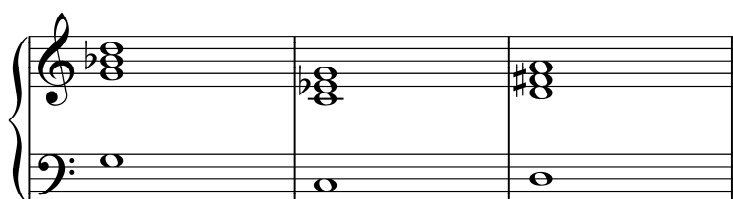
Augmented

diminished

(5 marks)

**Q. 7**

Write the **primary triads** found in the G harmonic minor scale using whole notes. Use accidentals and write the letter names and Roman Numerals below each triad.



G  
i

C  
iv

D  
v

(6 marks)

**Q. 8**

Complete the following sentences:

In a Major key, the two chords that make up a **perfect** cadence are V and I

In a harmonic minor key, the two chords that make up a **perfect** cadence are V and i

In a Major key, the two chords that make up a **plagal** cadence are IV and I

In a harmonic minor key, the two chords that make up a **plagal** cadence are iv and I

In a Major key, the chords that make up an **imperfect** cadence are anything and V

In a harmonic minor key, the chords that make up an **imperfect** cadence are anything and V

(4 marks)

**Q. 9**

Complete the following chord charts.

a.

Bass note – letter name	C	D	E <sub>b</sub>	F	G	A <sub>b</sub>	B
Bass note – solfa	l,	t,	d	r	m	f	si
Roman Numeral	i	ii <sup>o</sup>	III <sup>+</sup>	iv	V	VI	vii <sup>o</sup>

b.

Bass note – letter name	A	B	C <sup>#</sup>	D	E	F <sup>#</sup>	G <sup>#</sup>
Bass note – solfa	d	r	m	f	s	l	t
Roman Numeral	I	ii	iii	IV	V	vi	vii <sup>o</sup>

(12 marks)